

Skip the Base Stations and receive corrected signals right to your equipment, wirelessly.

eBridge

Wireless Connections to GPS Corrections

eBridge™, from Champion Instruments, enables GPS network corrections to be broadcast wirelessly, via the world wide web. eBridge eliminates the need for a traditional GPS Base Station and can receive internet signals nearly anywhere in the continental United States—or wherever a Real-Time Network (RTN) exists.

eBridge uses all common internet connections including Aircard, Wi-Fi, Bluetooth, or Ethernet and works with any cellular carrier's hardware. With eBridge, there is no dedicated monthly cellular bill for using GPS alone. No additional carrier charges need occur and there are no upgrade costs associated with cellular technology advances.

How does it work?

eBridge uses any internet connection, Aircard, Wi-Fi, Bluetooth, or Ethernet and works with any cellular carrier's hardware. It is pre-configured to access your RTK internet based network(RTN) correction. When you start your tractor the eBridge automatically starts up and begins working, your RTK system reaches a fixed state within minutes and you are ready to work.

What about functionality?

The Champion eBridge is designed to be compatible with all common RTK correction formats including CMR, CMR+, RTCM 2.X, RTCM 3.X, AutoMax, Max, iMax, and NCT (NavCom). Whatever your RTN can broadcast, the eBridge can pass on to your tractor.

eBridge works with all major Ag GPS equipment including Trimble, John Deere, Topcon, Leica, and AutoFarm.

How do I know its working?

In addition to the colored light indicators, you will know the eBridge is working by watching the RTK screen messages. The light indicators will confirm the process is working, and the RTK fix status will confirm that everything is working for RTK accuracy.

How hard is it to operate?

The eBridge is very simple to operate. It is pre-configured by your dealer to work on a RTN in your area with the GPS system you own or one you are purchasing. The internet is provided through the carrier of your choice via their modem devices and utilized for RTK corrections. You can rebroadcast the RTK correction with radios or directly wire to your GPS system for low cost functionality.



eBridge

General Specifications

Size	52mm x 178mm x 142mm
Weight	1.35 kg
Voltage Range	9 - 25V DC
Max Power Consumption	3 amps at 12V maximum
Operating Temp Range	-30C to 60C
Storage Temp Range	-40C to 70C
Humidity	non-condensing
Ruggedness Rating	IP54

License-free operation in North America

Notes: Specifications are subject to change without notice. Champion and Champion eBridge are Trademarks of Champion Instruments, LLC. Trimble, Leica, eGPS Solutions, John Deere, TopCon, AutoFarm and other trademarks are owned by their respective companies.

If you choose WiFi on your tractor, you can use eBridge for GPS and surf the web on your computer at the same time!

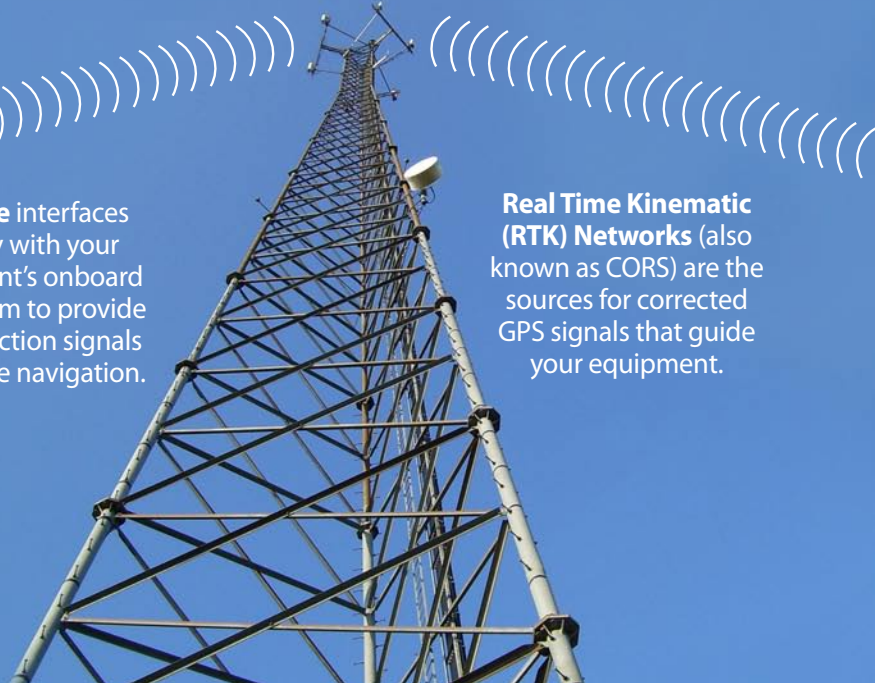
Features

- Enables wireless reception of network GPS/GNSS corrections
- Uses any internet connection, Air-card, Wi-Fi, Bluetooth, or Ethernet
- Works with any cellular carrier's hardware
- No monthly cellular bill
- No upgrade costs associated with cellular advances
- Up to eight (8) programmable configuration sets, or profiles
- Easily connects with all manufacturer's receivers and radios
- On board battery lasts for 12 hours of continuous use.
- Full one-year warranty against any product defects

Wireless Networks and the Internet provide the communication hub that connects you to the Real Time Kinematic (RTK) Networks that provide corrected GPS signals.

eBridge interfaces directly with your equipment's onboard RTK system to provide the correction signals that guide navigation.

Real Time Kinematic (RTK) Networks (also known as CORS) are the sources for corrected GPS signals that guide your equipment.



Local Dealer:



eGPS Solutions

4317 Park Drive
Suite 200
Norcross, GA 30093

(770) 695-3361 (tel)
(770) 695-0803 (fax)

info@egps.net
www.egps.net

